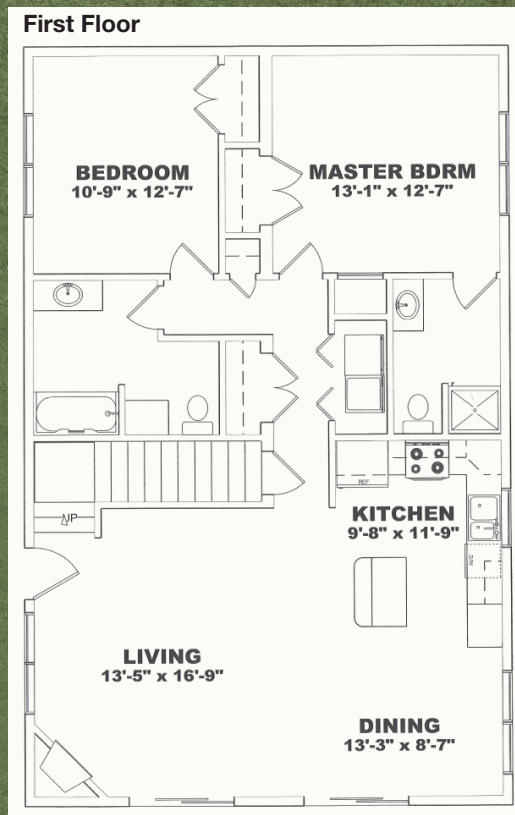


**2 BED / 2 BATH**  
**28' x 44'**  
**1496 sq. ft.**  
**includes unfinished Loft**



# Keystone

Plan #091709-1

Shown with log siding, green vinyl window package, optional deck and fireplace.


[www.superiorhomesllc.com](http://www.superiorhomesllc.com)

# Keystone **STANDARD FEATURES: Cabin with Vaulted Great Room and Unfinished Loft**


## INTERIOR


- Tape and texture ceiling
- Tape and texture walls with bullnose corners
- Plush carpet with deluxe pad- lr and bdrms
- Brushed nickel door hardware
- Linoleum flooring in br, kitchen, & dr
- Legacy trim package
- Prefinished 6-panel interior doors
- Wired, plumbed, vented for washer and dryer

## KITCHEN


- Custom built oak or Dakotaland cabinets 
- Adjustable shelves in overhead cabinet
- Drawer rollers throughout
- Stainless steel double sinks 8" deep
- Single lever faucet with spray nozzle
- Side-by-side refrigerator with ice and water
- Deluxe electric range
- Range hood with exhaust fan and light

## BATHROOMS




- Custom built oak or Dakotaland cabinets 
- China style lavatories
- 60" one-piece tubs
- Bath vent fan in each bath
- Vanity mirrors with strip lighting
- GFI electrical receptacle

 Standard features that add structural durability.

## EXTERIOR

- Architectural 30-year shingles 
- Anderson vinyl thermal windows maintenance free Low-E
- Vented vinyl soffit and steel fascia
- Maintenance free vinyl lap siding
- 6-panel steel exterior door and LARSON® storm door
- Porch lights at all entrances
- Double patio doors

## CONSTRUCTION

- Solid floor joist system
- 16" eaves
- 2" x 6" exterior walls – 2" x 4" interior walls 16" o.c. 
- R38 insulation in roof (10/12 roof pitch)
- R19 insulation in exterior walls
- 3/4" tongue and groove floor decking
- 7/16" OSB on both sides of exterior walls 
- 8' sidewalls 

## MECHANICAL & ELECTRICAL

- Copper wire throughout
- 200 Amp electric panel
- Water shut off valves throughout
- Brushed nickel glass globe light fixtures
- Chandelier in dining room
- Smoke detector with battery backup

Superior Homes are proudly built with products from premier manufacturers.



## OPTIONAL UPGRADES

Listed are some of the available upgrade options. Superior Homes offers many popular floor plans as well as the opportunity to customize. Homeowners are able to create a one-of-a-kind home designed especially for them.

### EXTERIOR

- Log siding
- L.P. smart siding
- Deck
- Dormers
- Garden door
- Decorative exterior door
- Green vinyl window package
- Gridded windows

### INTERIOR

- Finished loft
- Rustic hickory cabinets
- Knotty pine doors and trim

### INTERIOR *continued*

- Laminated flooring
- Fireplace
- 6-door bench bay
- Knotty pine tongue and groove walls

### KITCHEN

- High definition countertops
- Raised panel cabinet doors
- Ceramic back splash and edging
- Stainless steel or black appliance package
- Roll-out shelves
- Dishwasher
- Microwave over range

### BATHROOMS

- Corner oval tub with whirlpool
- Neo-angle shower stall
- Elongated stools
- Additional 1/2 bath
- Ceramic back splash / ceramic edging
- Beveled counter edge

### GREEN

- Floor-wall-ceiling insulation upgrades
- High efficiency furnace
- Energy Star appliances
- Argon Gas window option



715 21st Street SW | Watertown, SD 57201 | 605.886.3270

Due to continuous product development and improvement, prices, specifications and materials are subject to change without notice or obligation. Square footage and other dimensions are approximate. Included renderings are artist renderings and are not intended to be an accurate representation of the home. Renderings and floor plans may be shown with optional features that may not be available in all situations.